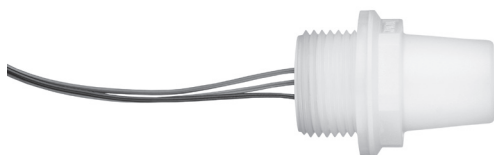


Specifications

Features

- LED Signal lamp
- High luminosity, visible from all sides
- 2-color (red/green)
- ATEX, IEC-Ex, cFMus approvals
- Suitable for installation in an external electrical equipment that meets the respective approvals:
 - Installation in a housing cable entry, housing wall or cover
 - Installation in control panels or control cabinets



Technical Data

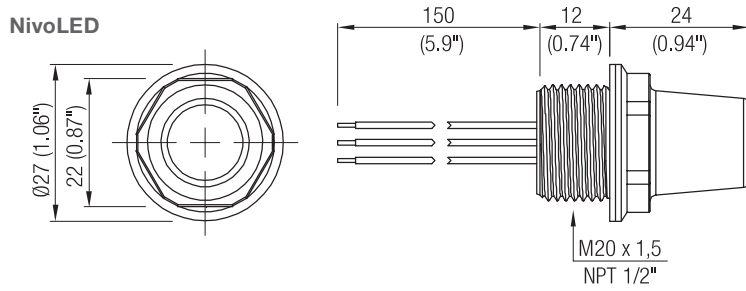
Power supply	20 .. 30V DC 90 .. 127V 50-60Hz 195 .. 253V 50-60Hz
Connection thread	M20 x 1.5 NPT 1/2" ANSI B1.20.1
Luminous colors	Red / green
Material housing	PVDF
Material flat sealing	Silicone (for connection thread M20 x 1.5)
Degree of protection	IP66, Type 4X
Ambient temperature	-40 .. +60°C (-40 .. +140°F)

Approvals

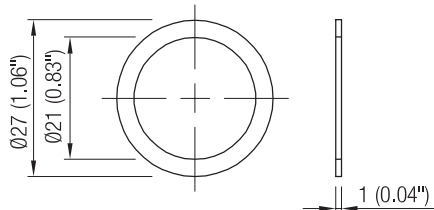
General Purpose	CE cFMus	EN 61010-1
Dust Hazardous Locations	ATEX IEC-Ex cFMus	II 2D Ex tb IIIC T120°C Db Ex tb IIIC T120°C Db DIP Cl. II, III, Div. 1, Group E,F,G, T4A
Gas Hazardous Locations	ATEX IEC-Ex cFMus	II 3G Ex ec IIC 120°C (T4) Gc Ex ec IIC 120°C (T4) Gc NI Cl. I, Div. 2, Group A-D, T4A
RoHS konform	According to directive 2011/65/EU	

Dimensions / Connection

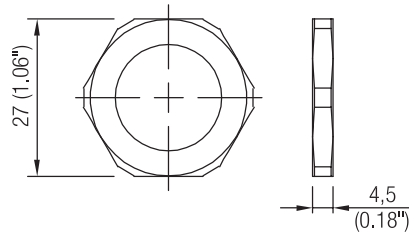
Dimensions



Flat sealing
 For connection thread M20 x 1.5

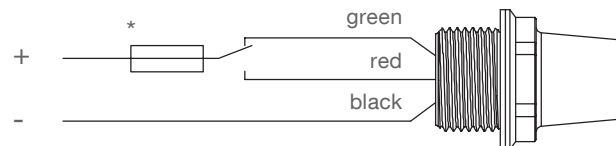


Counter nut M20 x 1.5 Metal
 Accessory, article number: zu301004

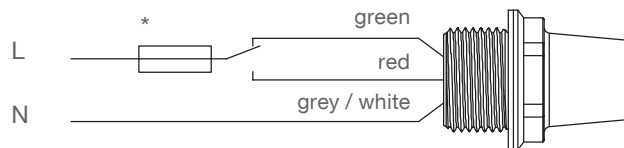


Electrical connection

Version
 20 .. 30V DC



Version
 90 .. 127V 50-60Hz
 195 .. 253V 50-60Hz

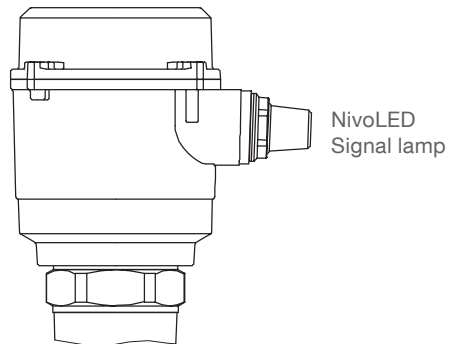


* Fuse: max. 4 A, fast or slow, HBC, 250 V

Wire colors:
 Green / red corresponds to the luminous color
 Grey present at version 90 .. 127V 50-60Hz
 White present at version 195 .. 253V 50-60Hz

Installation in a Level limit switch

Installation in the cable entry of a Level limit switch



Connection diagram for installation in the various series of UWT Level limit switches:
See external documentation "Plugs and Signal lamps - connecting diagram"